

# The Exinda 4061

Unified Performance Management for Medium/Large Branch Offices



## The Exinda 4061

Designed for medium to large branch offices, the 4061 model expands to support up to 155 Mbps worth of traffic and up to 1,000 users.

Built upon Exinda's new 64bit architecture, and featuring a multi queue network interface controller (NIC) combined with a multi threaded operating system (OS); this new model offers scalability and performance at a price that satisfies even the most cost-conscious buyers.

## The Challenge

Everyday more and more data is being pushed across our networks. Increased growth and reliance of web based applications, VoIP, streaming video and Internet usage have congested our networks and made them unreliable. Network users are spending more and more time waiting at screen (TWAS) as applications compete for finite resources over stressed, over-run networks. This proliferation of traffic has degraded our networks' speed and performance and resulted in productivity losses.

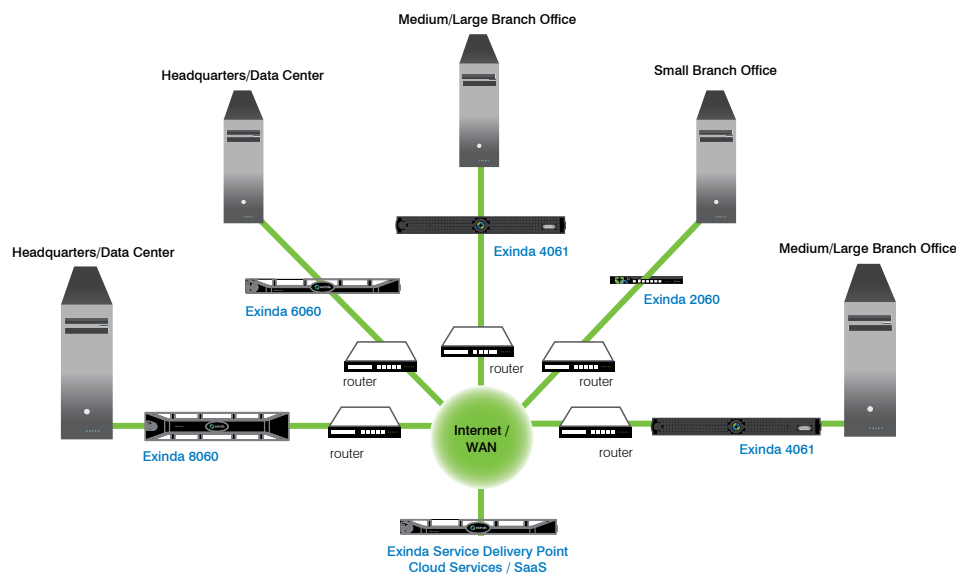
The challenge faced by IT professionals today, is how to gain visibility into the network, identify what applications and users are causing the congestion and put policies in place to ensure applications and data run smoothly over your network, despite the ever-increasing demand?

## The Solution

Exinda provide users with the best network experience possible by maximizing the speed and efficiency of applications over the network.

Exinda's unified performance management (UPM) solution brings together a suite of advanced, best-of-breed, visibility, traffic-shaping and WAN optimization technologies into a single, easy to-use appliance designed to improve network productivity.

Exinda is the only unified performance management solution on the market. Controlled through a seamlessly integrated, unified management console, Exinda reduces costs, increases revenue and allows you to get the most out of your network.



## Features & Benefits

### Visibility

Provides insight into network activity, usage and performance. Gives you the information you need to keep your network operating at peak performance

- Layer 7 Classification
- Heuristic Classification
- URL Classification
- Drill Down Capabilities
- Real Time Monitoring
- Top Talkers/Top Conversations
- Active Directory User ID
- Anonymous Proxy Detection
- Application Response Time
- Service Level Agreements
- Citrix Published Applications
- Automated PDF Reporting

### Control

Maximize network resources to the needs of your organization through comprehensive control over network traffic without placing heavy-handed restrictions on users.

- QoS / Dynamic per IP User
- Bandwidth Management
- Traffic-shaping
- Prioritization
- Active Directory Integration

### Optimization

Rapidly, turn understanding into action that drives network performance, improves the user experience, and optimizes productivity.

- Layer 4 TCP Optimization
- Layer 7 Application Acceleration
- Universal Caching
- Compression
- Intelligent Acceleration
- Peer Auto-Discovery



## Exinda 4061 Hardware Specifications

Form Factor	19" 1U rack mount
Dimensions	431 x 42.6 x 393.7 mm, 17.1" x 1.67" x 15.50"
Weight	11.8 kg / 26 lb
CPU	Intel® Core™ i3 530 2.93GHz, 4M Cache, 2C/4T
RAM	2GB Memory (1x2GB), 1333MHz, Dual Ranked UDIMM
HDD	250GB 7.2k RPM Serial ATA 3Gbps 3.5-in
Data Store / Cache Size	195GB
NICs (default)	2 x 10/100/1000 copper (onboard) + 2 x 10/100/1000 copper bypass (slot 1)
NICs (expandable to)	2 x 10/100/1000 copper (onboard) + 6 x 10/100/1000/10000 copper/fiber
Bridges/Bypass Pairs (default)	1
Bridges/Bypass Pairs (expandable to)	3
Interface NIC Slots	1
Console	RS-232 male DB-9
Power Supply Type	Internal, Fixed
Power Rating	Single power supply (345W), Auto Ranging (100V~240V)
Environment	0-40C, storage temp 20-80C relative humidity 0-90% (non-condensing)
Approvals	CE,FCC, Certified/RoHS

## Software Specifications

### x700 Software Visibility & Control

### x800 Software Visibility, Control & Optimization

Licensed Bandwidth (full duplex)	2	10	15	20	45	100	155	250	1	2	3	6	10	20
Max. Device Throughput (Mbps)	10,000	10,000	10,000	10,000	10,000	10,000	10,000	10,000	10,000	10,000	10,000	10,000	10,000	10,000
Max. Concurrent Flows	64,000	128,000	128,000	256,000	256,000	384,000	512,000	768,000	32,000	64,000	64,000	128,000	256,000	384,000
Max. L7 New Conn Rate	300	300	300	300	300	300	300	300	300	300	300	300	300	300
Reports (PDF)	4	6	8	10	16	20	20	20	4	6	6	8	10	12
SLAs	70	100	100	120	120	150	150	150	40	60	60	80	100	120
ARM Objects	5	5	5	10	10	20	20	20	5	5	5	5	5	10
Policies	128	256	256	384	384	512	512	512	128	128	128	256	256	384
Accelerated Connections									500	750	900	1,000	1,250	1,500
WAN Optimization (Mbps)									1	2	3	6	10	20
Max WAN Shaped/QoS (Mbps)									2	15	15	15	45	155
Disk Size (GB)									250	250	250	250	250	250
Data Storage (GB)									195	195	195	195	195	195

## About Exinda®

Exinda is a proven global supplier of WAN Optimization and Traffic Shaping products. The company has helped over 1,500 organizations in 80 countries worldwide to reduce network operating costs and ensure consistent application performance over the WAN. The Exinda Unified Performance Management (UPM) solution encompasses application visibility, control, optimization and intelligent acceleration – all within a single network appliance that is affordable and easy to manage.

**North America**  
+1 877 219 0603  
[info.americas@exinda.com](mailto:info.americas@exinda.com)

**EMEA**  
+44 808 120 1996  
[info.emea@exinda.com](mailto:info.emea@exinda.com)

**Asia Pacific**  
+61 3 9415 8332  
[info.apac@exinda.com](mailto:info.apac@exinda.com)