

# aGALAXY

## Centralized Management Solution

### Supported Platforms



aGalaxy  
centralized management

### Managed Platforms



Thunder and AX ADC  
physical appliance



Thunder and AX CGN  
physical appliance



Thunder HVA  
hybrid virtual appliance



vThunder  
virtual appliance

### Overview

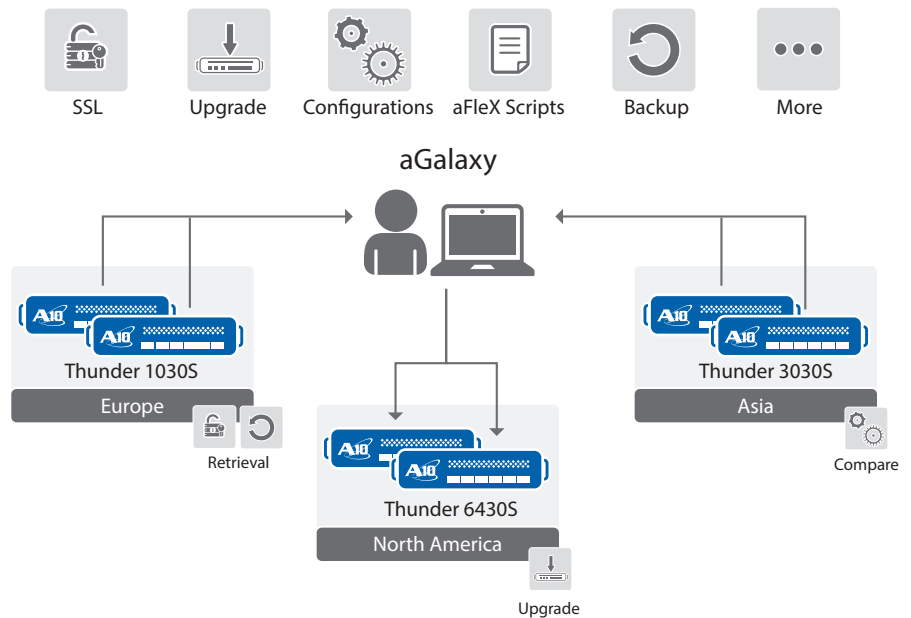
- Highly scalable management solution
- Supports all A10 Thunder™ and AX Series hardware and software appliances
- Streamlined operation to reduce operating costs

In large networks, multiple A10 Thunder™ and AX Series appliances, physical or virtual, are deployed to enable business-critical systems to reach their users. While full control of A10 Thunder and AX Series devices can be achieved effectively by direct CLI, GUI or aXAPI out-of-the-box by default, the benefit of central and automated management increases as more appliances are added.

A10's aGalaxy™ network management solution enables a network administrator to manage any A10 device from a single point. aGalaxy is a robust network monitoring and network management solution that offers an intuitive interface that can be utilized to perform and automate a variety of essential tasks. For example, aGalaxy allows efficient centralized monitoring, upgrades, SSL certificate management, aFlex TCL script management, configuration, backups and restore.

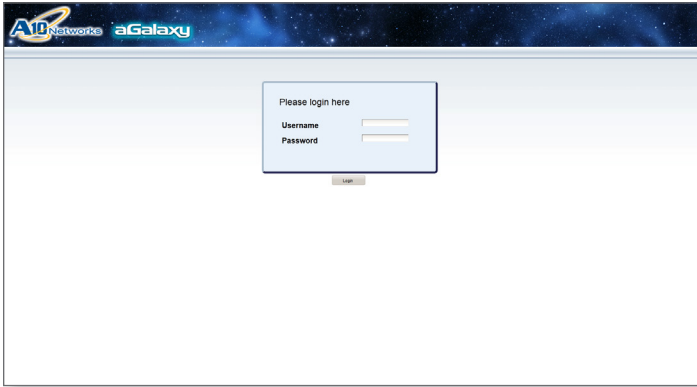
aGalaxy is available in a quick-to-deploy virtual appliance and can help offer immediate benefits and fast ROI, which increases as more appliances are used.

### Architecture and Key Components

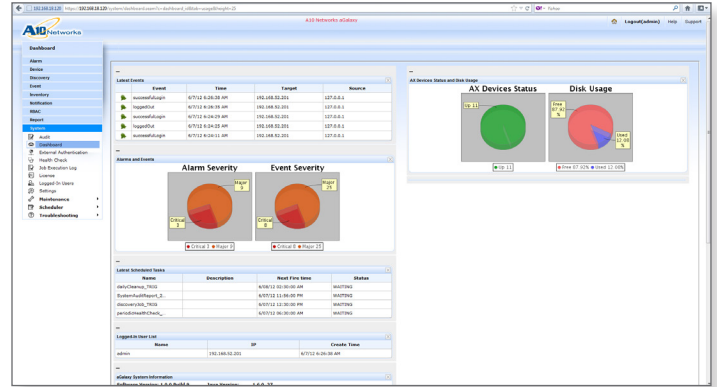


Sample aGalaxy use case showing SSL and backup retrieval from Europe, upgrades in North America and configurations retrieved and compared from Asia

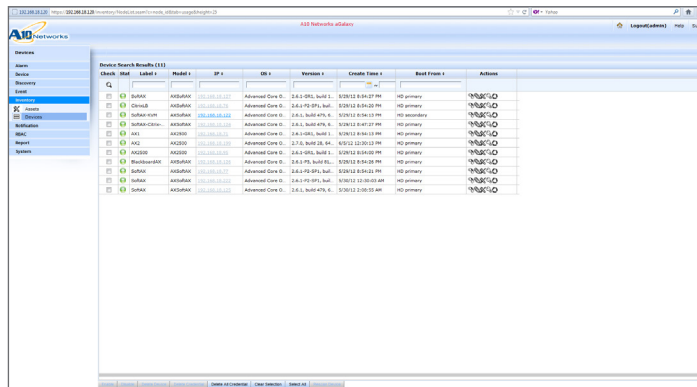
A10's network management solution offers a real-time unified view of all A10 devices in your network. The GUI provides a quick, at-a-glance view of status using a standard web browser.



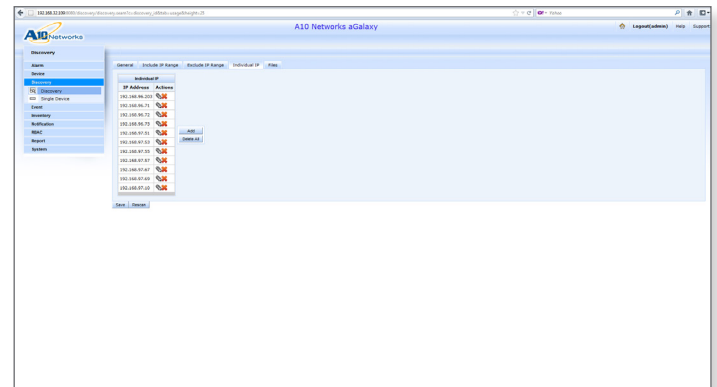
Intuitive web-based GUI



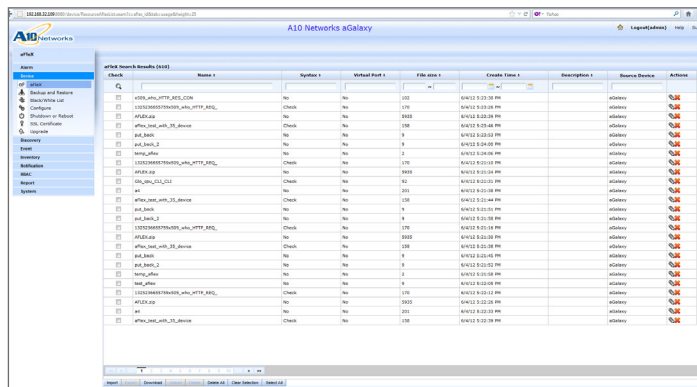
Dashboard provides a detailed view of device status



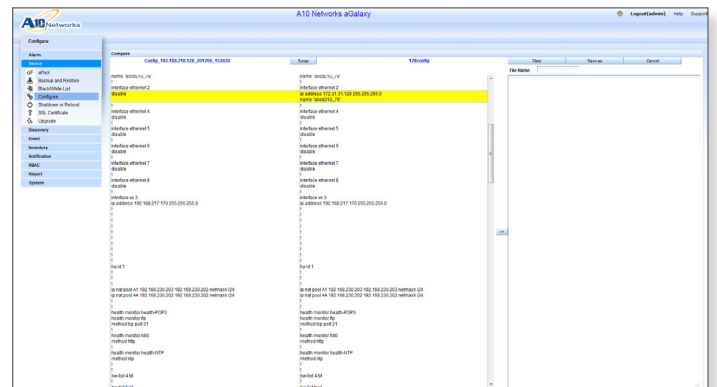
Inventory list shows all devices and status at a-glance



Device discovery finds all devices



aFlex TCL scripts can be stored for on-demand centralized deployment



Side-by-side comparison of A10 configuration files

## Features and Benefits

### Simplified Device Management

- Physical and virtual A10 device autodiscovery
- Real-time and centralized management for all A10 devices
- Configuration, backup and restore
- Central SSL management, including certificate and key retrieval, storage, deployment and expiration alert
- Centralized management for upgrades and image upgrade repository
- Reboot and shutdown features
- Configuration deployment and comparison
- aFlex™ TCL script management, including retrieval, storage and deployment

### Event Management and Reporting

- Categorize events by severity, event ID and more
- Accurate information for network availability, usage, performance and inventory
- Searchable audit logs that track username, IP address and time of login
- Data consolidation across multiple panels into real-time web dashboard
- Dynamic dashboard monitoring
- Wizard-based system configuration
- Uptime history
- Customizable event alerts/alarms

### Advanced Management

- Role-based access control management
- External authentication supports RADIUS and TACACS+
- Black/white list with bandwidth and access limitations

## Summary – Device discovery finds all devices

aGalaxy ensures lower operational costs as staff are freed up from repetitive tasks, while also increasing precision and accuracy with centralized and automated tasks, reducing the potential for human error.

### aGalaxy Virtual Appliance Specifications

Devices Supported	200+
A10 Version Supported	2.4.3 or higher
Standard Warranty	90-day software

### aGalaxy Virtual Appliance Requirements

Hypervisor	VMware ESXi 5.0 or higher
Processor	2.5 GHz (Dual-core) or higher
Memory	8 GB
Storage	300 GB
Browser	Internet Explorer 8.x and Firefox 9.x or above

## About A10 Networks

A10 Networks is a leader in application networking, providing a range of high-performance application networking solutions that help organizations ensure that their data center applications and networks remain highly available, accelerated and secure. Founded in 2004, A10 Networks is based in San Jose, California, and serves customers globally with offices worldwide. For more information, visit:

[www.a10networks.com](http://www.a10networks.com)

### Corporate Headquarters

**A10 Networks, Inc**  
3 West Plumeria Ave.  
San Jose, CA 95134 USA  
Tel: +1 408 325-8668  
Fax: +1 408 325-8666  
[www.a10networks.com](http://www.a10networks.com)

### Worldwide Offices

**North America**  
[sales@a10networks.com](mailto:sales@a10networks.com)  
**Europe**  
[emea\\_sales@a10networks.com](mailto:emea_sales@a10networks.com)  
**South America**  
[brazil@a10networks.com](mailto:brazil@a10networks.com)  
**Japan**  
[jinfo@a10networks.com](mailto:jinfo@a10networks.com)  
**China**  
[china\\_sales@a10networks.com](mailto:china_sales@a10networks.com)

**Taiwan**  
[taiwan@a10networks.com](mailto:taiwan@a10networks.com)  
**Korea**  
[korea@a10networks.com](mailto:korea@a10networks.com)  
**Hong Kong**  
[HongKong@a10networks.com](mailto:HongKong@a10networks.com)  
**South Asia**  
[SouthAsia@a10networks.com](mailto:SouthAsia@a10networks.com)  
**Australia/New Zealand**  
[anz\\_sales@a10networks.com](mailto:anz_sales@a10networks.com)

To learn more about the A10 Thunder Application Service Gateways and how it can enhance your business, contact A10 Networks at: [www.a10networks.com/contact](http://www.a10networks.com/contact) or call to talk to an A10 sales representative.